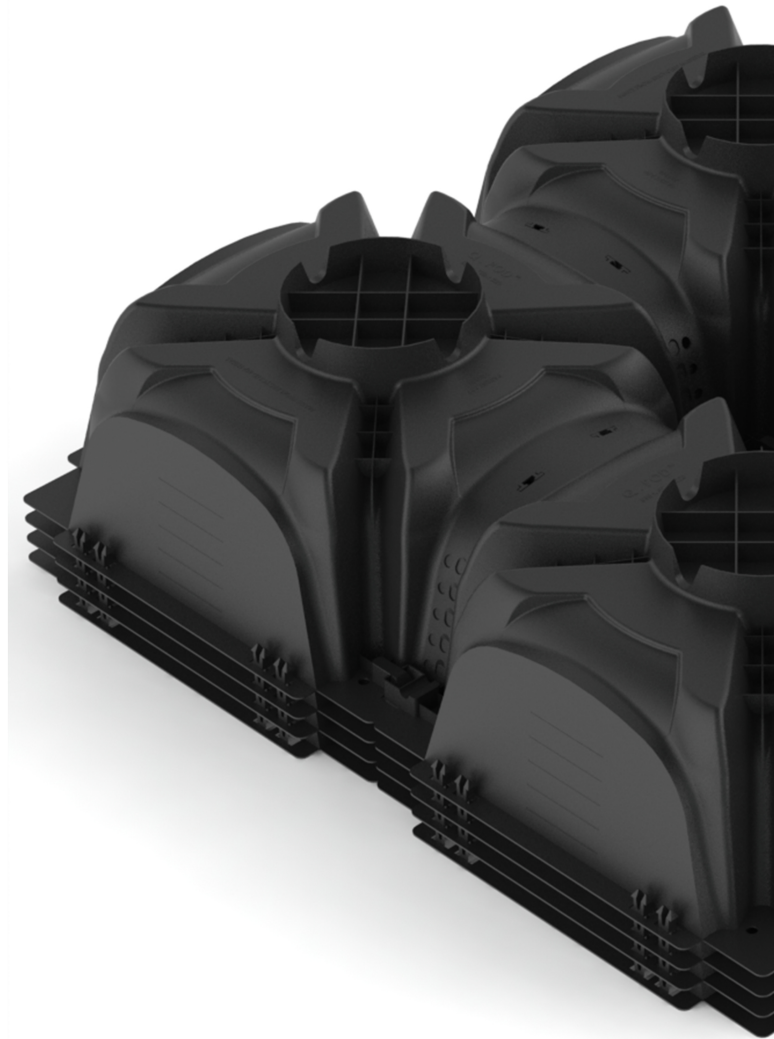


QPOD Installation Guide

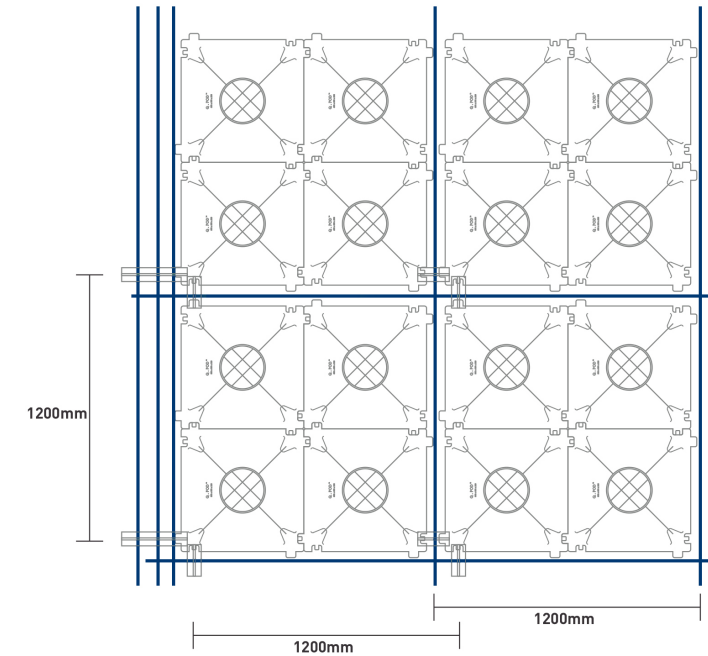
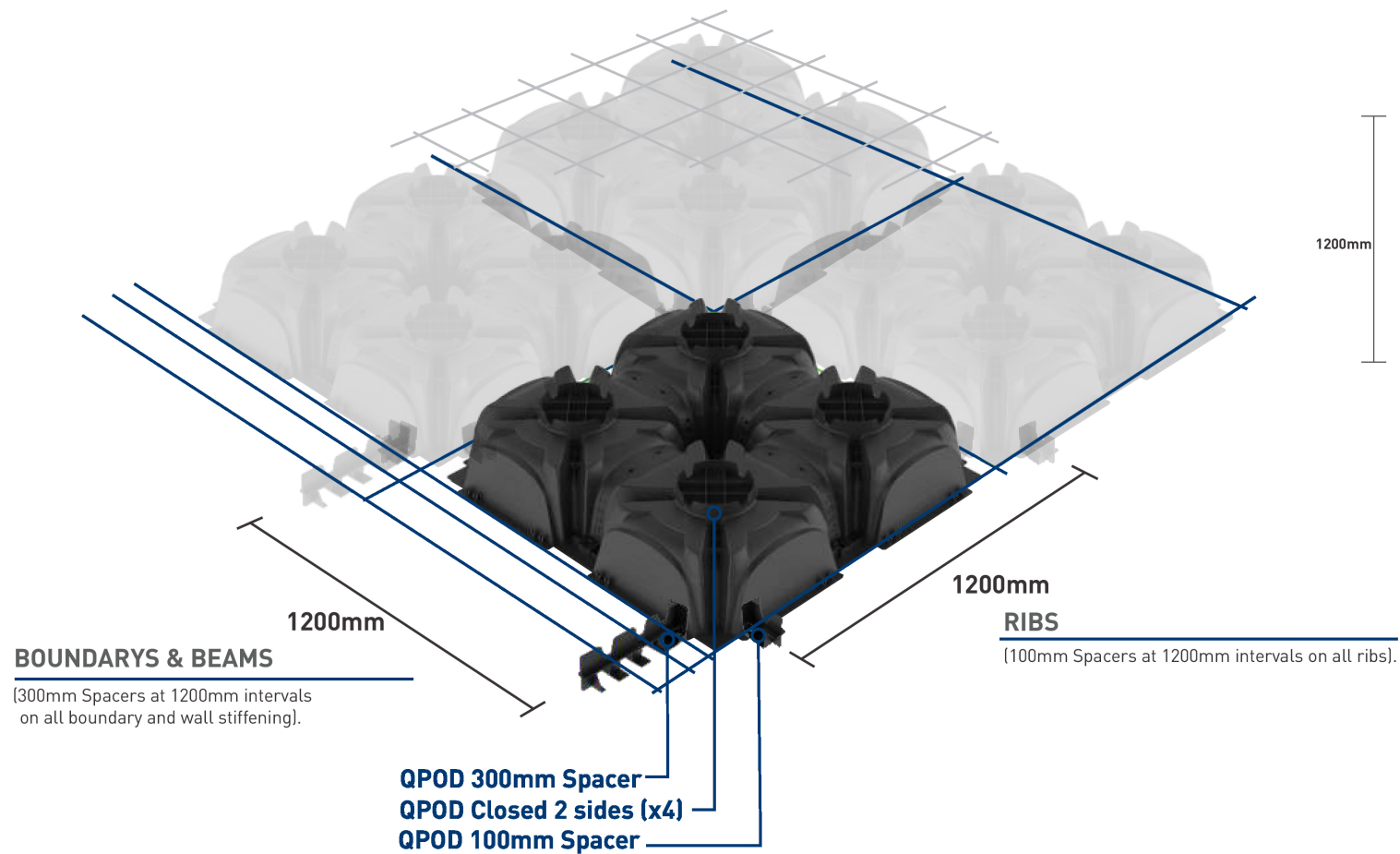


QPOD™ PRODUCT GUIDE

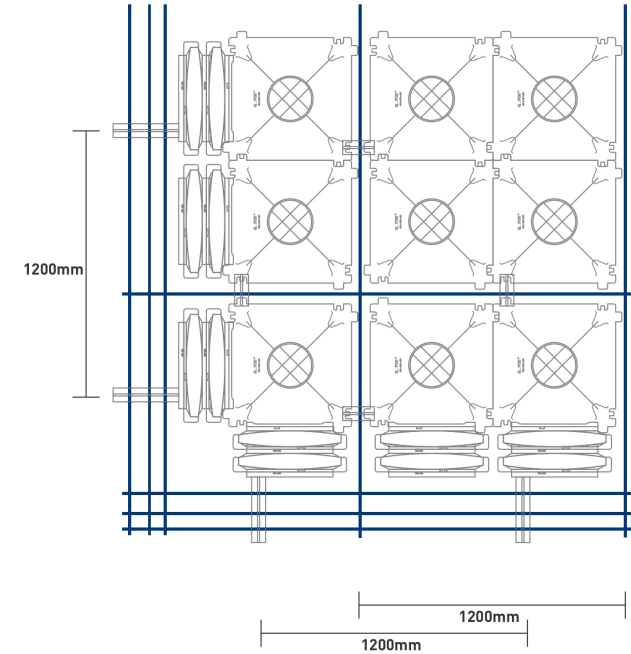
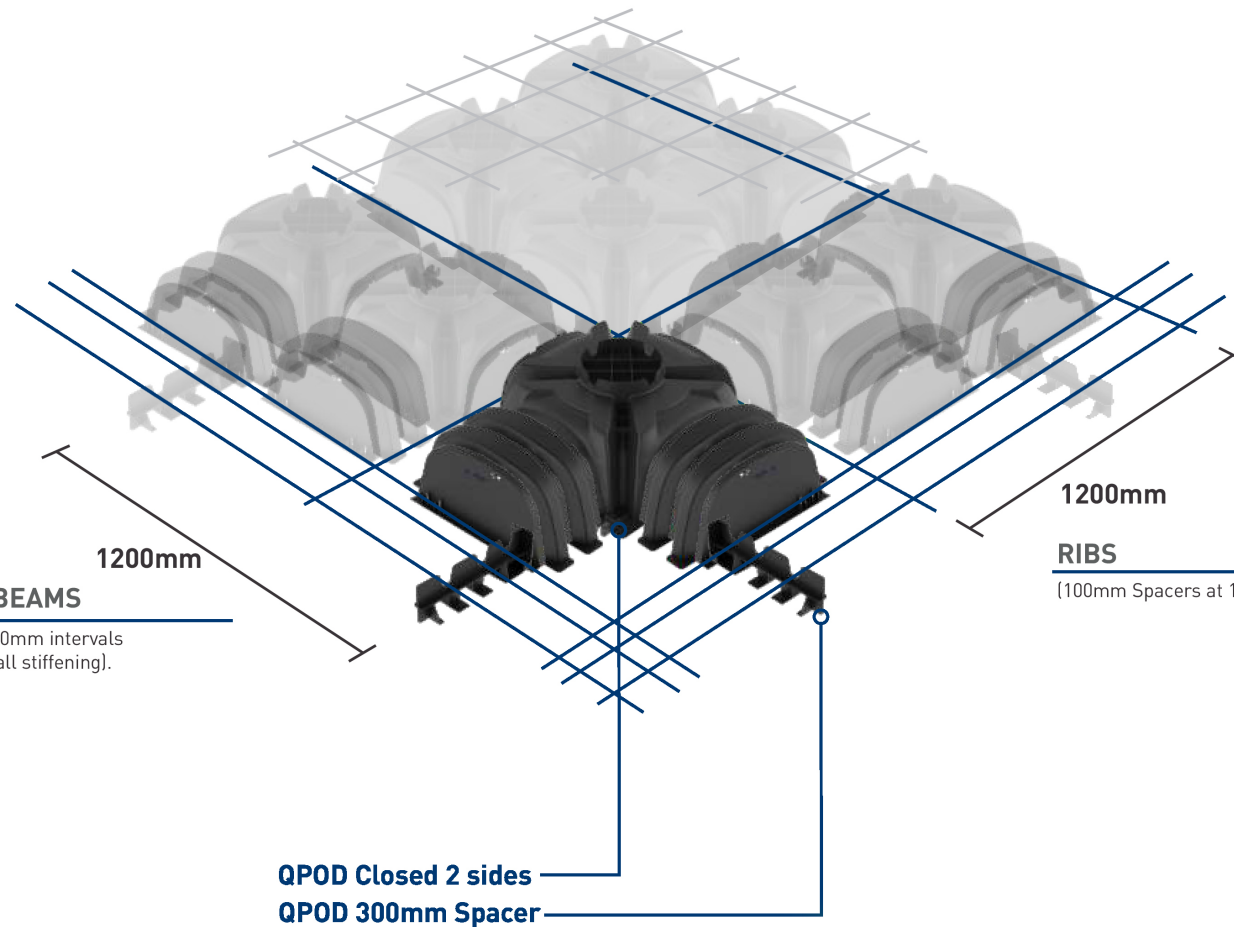


Code	Description	Pack size	Pack type
QPC	QPOD Closed 2 sides	140	Pallet
QPO	QPOD Open all Sides	140	Pallet
QPEX	QPOD 100mm Extension	30	Strap Pack
QPEC	QPOD End Cap	10	Bag
QPS100	QPOD 100mm Spacer	50	Bag
QPS300	QPOD 300mm Spacer	20	Bag
QPS400	QPOD 400mm Spacer	20	Bag

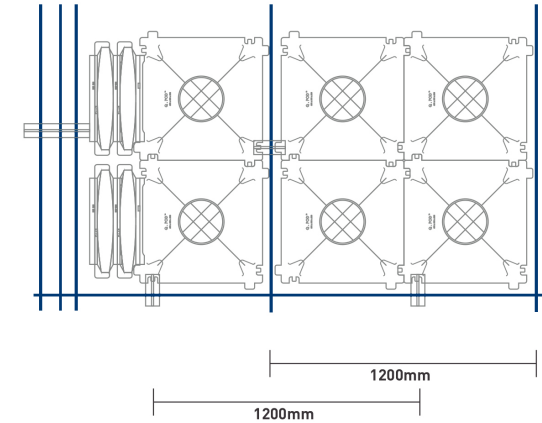
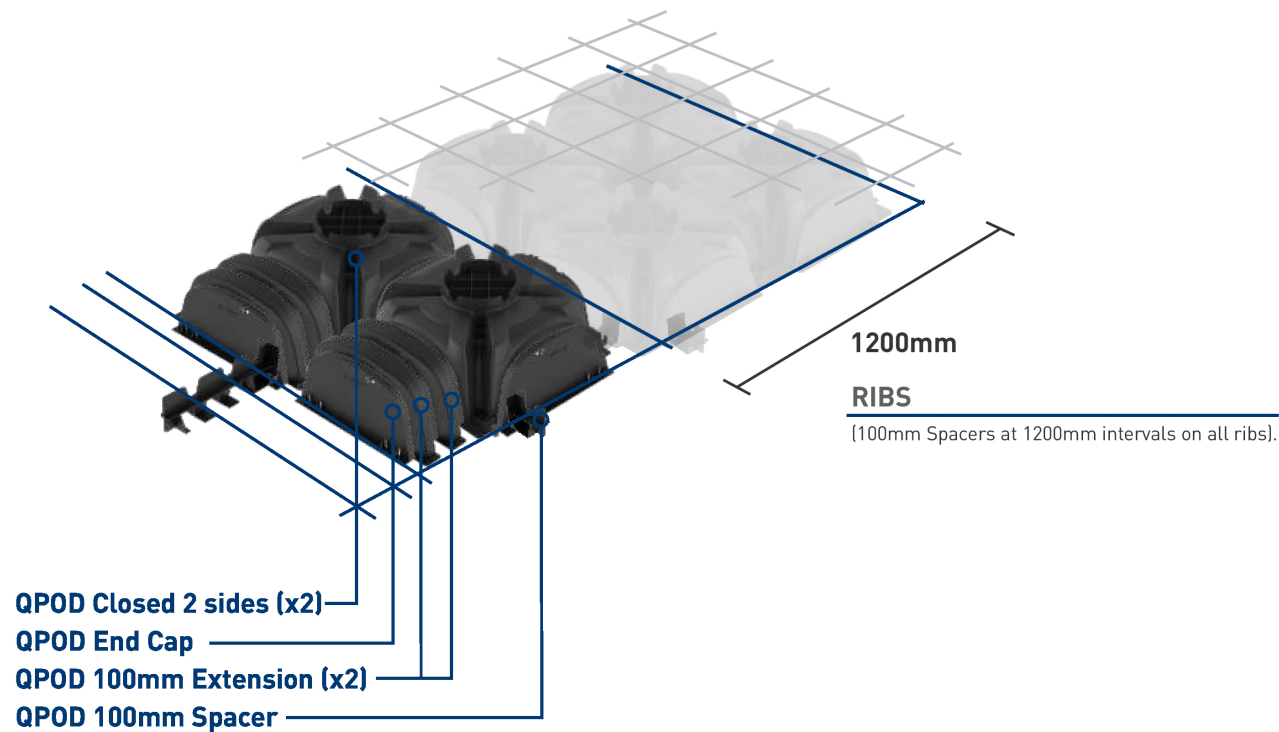
QPOD™ STANDARD LAY CONFIGURATION



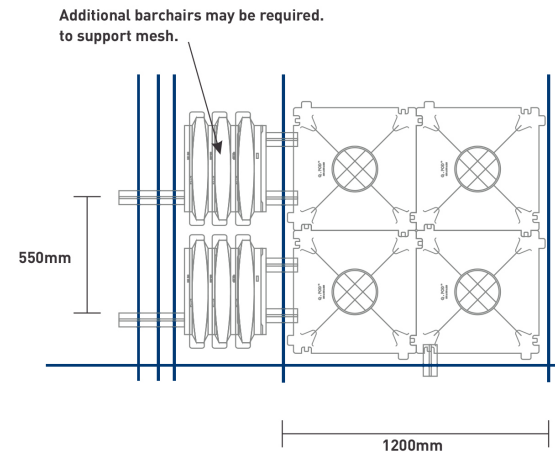
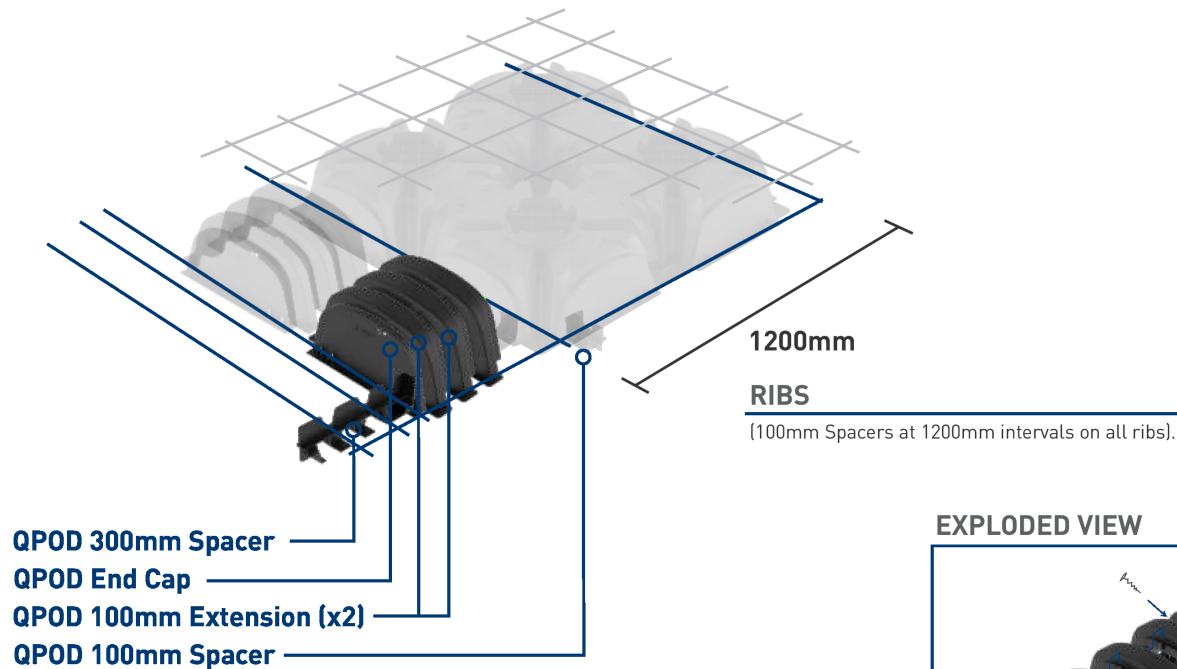
QPOD™ CREATING A CORNER POD WITH EXTENSIONS



QPOD™ CREATING A DOUBLE POD WITH EXTENSIONS



QPOD™ CREATING A STANDALONE VOID FILLER



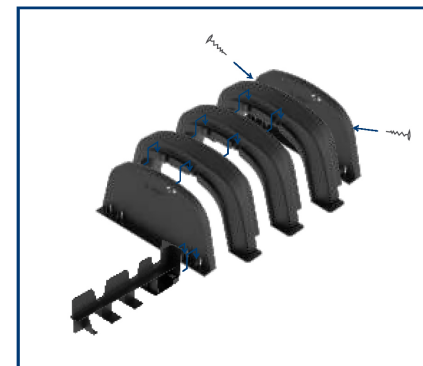
VOID FILLERS

Although standalone void fillers are not recommended they may be required in an isolated pocket to fill a void. Standalone void fillers are made up of 1-4 100mm extensions and 2x end caps. Standalone Void fillers must be supported on both sides with additional 100-300mm spacers (at least 3x per void filler). Spacers must be attached to the end cap. Additional barchairs may be specified to hold mesh from sagging.

ASSEMBLY

As cap doesn't fix to opposite end of extensions, fix 2nd end cap secure with screws.

EXPLODED VIEW



Contact

0800 4 ALLIED
www.alliedconcrete.co.nz