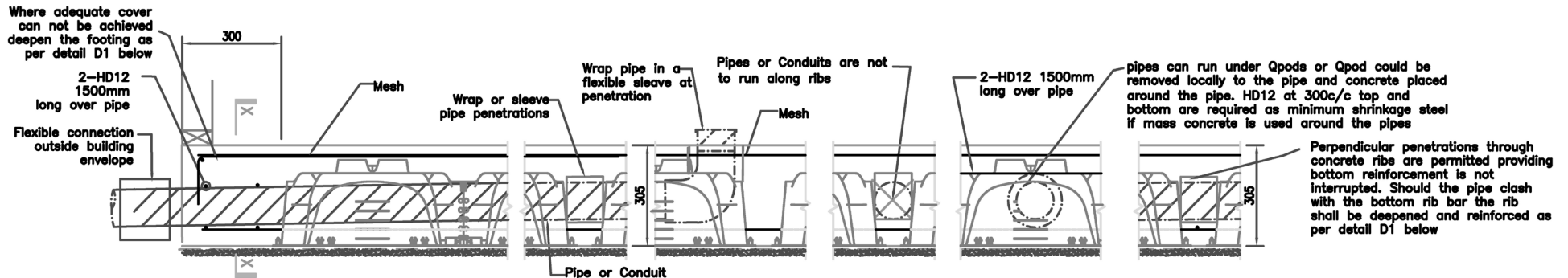


Pipe Penetration Details For High Seismic Zones

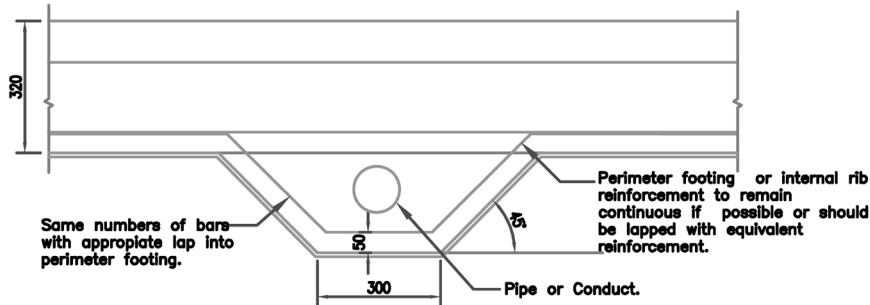
Refer to MBIE Guideline Section A figure S14 & S15 and building code clause G13



TYPE 1 PIPE PENETRATIONS

Cross Section X-X

The pipe can be seated on bottom reinforcement, however 30mm minimum top cover needs to be achieved for the top reinforcement over the pipe as shown. Where the pipe clashes with bottom steel or top cover can not be achieved, the perimeter footing shall be deepened and reinforced as per detail D1 below. Where the pipe diameter is larger than 50mm and a brick rebate is required detail D1 shall be adopted to ensure continuity of the reinforcement.



Detail D1 - Typical deepened edge penetration detail for Type 1 where pipes clash with bottom reinforcement to be extended as required back into the slab. (112.5mm diameter max.)

